

## *Retrofitting works are commenced at Radio Center*

### *- Erection steel Brace -*

On 29 August 2016, the first steel brace was erected at Radio Center. PWD published "Retrofitting design manual" and "Supervision of retrofitting at the site". After arranging manuals by PWD, the radio center is the first retrofitting works.

Besides, PWD accumulated the retrofitting works, Tejigaon fire station, DK nit-wear, and Smart Nit ware. But the installation of the steel brace at forth floor that means high level floor is the first trial for PWD.

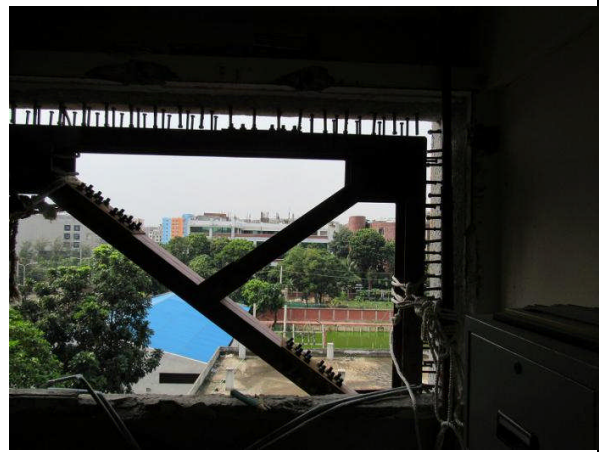
In Bangladesh, a lot of the high rise buildings are increasing nowadays. Thus PWD should have a challenge installation of steel brace at high position.

Considering this fact, technology of the Installation of brace at high levels are necessary skill for PWD.

On 29th AUG, at 10:00 AM the crane was set at the site. The crane can hung up steel brace at 11:00. And installation is finished by 12:00. The responsible of Sub-division Engineer Rashed did his best to safety erection at the site.

We mention again, the experience of the installation of a steel brace at high position becomes a good record for PWD.

We are very happy to inform you of the steel brace retrofitting works at high levels radio center in this newsletter..



**Installation of brace at high levels**